

# **Poso Creek Integrated Regional Water Management (IRWM) Group Project and Program Report List**

*Active Projects and Programs (Based on IRWM Group Submissions)*

The tables and corresponding map of the Poso Creek region on the following pages include the projects and programs which have been submitted by the districts, agencies, organizations, and individuals that participate in the IRWM Group. Each project and program was reviewed by the Regional Water Management Group (RWMG) and various Work Groups as to how they achieve the Regional Goals and Measurable Objectives set forth in the *2014 IRWMP Update, Sections 4.4 and 4.5*, respectively (see ‘Goals and Objectives’ page). Applicable Measurable Objectives and Applicant(s) are identified, and each project and program is labeled with a “Map No.” corresponding to the locations in and around the region as shown in corresponding map.

The projects and programs are also classified by a “status”, meaning the readiness for implementation and/or inclusion in grant funding applications. These designations are not part of a formal submission or review process, but are simply used by the IRWM Group as a means of tracking approved projects and programs. The following are the three statuses used:

- 1) “Near Term” (N), meaning a project or program has already been subjected to planning and preliminary design phases. These activities are effectively ready for implementation and will likely be included in grant applications, assuming they meet funding opportunity guidelines.
- 2) “Long Term” (L), meaning a project or program that is only in the conceptual phase, potentially with some minor planning or design documentation. Although these activities may be streamlined to meet grant funding opportunities (i.e., pushed towards implementation readiness for a particular grant application), in general, more planning and design work will need to be performed by the Applicant and IRWM Group. As such, these activities will likely be “ready” in more than one year from the release of this Plan.
- 3) “Continuous/On-Going” (C), meaning a project or program which has begun but is not subjected to a near-term end (completion) date. The implementation of these activities continues over a longer period of time, with support from the IRWM Group.

The projects and programs listed in these tables vary in terms of their generalized “purpose(s)” towards the water supply and management concerns of the IRWM Group. Note that some of these projects and programs were submitted prior to or following adoption of the *2014 IRWMP Update*. As such, the RWMG is making a concerted effort to refile and organize Project Definition and Characterization Forms (PDCF) for each of these activities which formally defines the purposes of each project/program, as well as an estimation of regional impacts and benefits. A PDCF for each project and program will be made available to the IRWM Group as they are compiled.

## Poso Creek IRWM Project and Program Report List

Page 1 of 5

Active Projects and Programs (Based on IRWM Group Submissions)

List Printed on: 5/30/2014

| Map No. <sup>1</sup> | Status <sup>2</sup> | Year(s) <sup>3</sup> | Activity Title   | Activity Type | Purpose                           | Applicant                 | Measurable Objective(s)* | Estimated Total Cost(s) |
|----------------------|---------------------|----------------------|--|---------------|-----------------------------------|---------------------------|--------------------------|-------------------------|
| 1                    | L                   | 2014+                | Connect Friant-Kern Canal Turnout to Cawelo's North System   | Project       | Expand In-Lieu Service Areas      | Cawelo WD                 | C, D, E, K, L            |                         |
| 2                    | L                   | 2014+                | Cecil Avenue Piepline Capacity Expansion   | Project       | Modify Water Conveyance Systems   | Kern-Tulare WD            | C, D, E, K, L            | \$ 8,500,000            |
| 3                    | N                   | 2012-2020            | Stored Water Recovery Unit   | Project       | Expand In-Lieu Service Areas      | Semitropic WSD            | A, C, D, E, F, G, K, L   | \$ 32,000,000           |
| 4A                   | N                   | 2013-2016            | GW-Banking (North of DEID with Pixley ID)  | Project       | Expand Direct Recharge Facilities | Delano-Earlimart ID       | C, D, E, F, G, H, K, L   | \$ 37,000,000           |
| 4B                   | N                   | 2014+                | GW-Banking (SWID at Kimberlina)  | Project       | Expand Direct Recharge Facilities | Shafter-Wasco ID          | C, D, E, F, G, H, K, L   | \$ 6,000,000            |
| 5                    | L                   | 2014+                | G-W Banking Conveyance Improvements to North Kern WSD Recharge and Recovery Facilities, and G-W Recovery Wells | Project       | Expand Direct Recharge Facilities | North Kern WSD            | C, D, E, F, G, H, K, L   |                         |
| 6A                   | L                   | 2014+                | Phase II: Pond Poso Spreading and Recovery Facility  | Project       | Expand Direct Recharge Facilities | Semitropic WSD            | C, D, E, F, G, H, K, L   |                         |
| 6B                   | L                   | 2014+                | Pond-Poso Entrance Ponds   | Project       | Expand Direct Recharge Facilities | Semitropic WSD            | C, D, E, F, G, H, K, L   |                         |
| 7A                   | N                   | 2013-2016            | Calloway Canal Improvements: Lining Hagemann Rd. to Calloway Dr.   | Project       | Modify Water Conveyance Systems   | North Kern WSD, Cawelo WD | C, D, E, F, G, H, K, L   | \$ 8,200,000            |
| 7B                   | L                   | 2014+                | Calloway Canal Improvements: Calloway Canal to Friant Kern Canal Intertie                                      | Project       | Modify Water Conveyance Systems   | Delano-Earlimart ID       | C, E, G, H, K, L         |                         |
| 7C                   | L                   | 2014+                | Calloway Canal Improvements: Siphon at CVC to Calloway Intertie  | Project       | Modify Water Conveyance Systems   | North Kern WSD            | C, E, G, H, K, L         | \$ 2,000,000            |
| 7D                   | L                   | 2014+                | Calloway Canal Improvements: 8-1 Pumping Plant Connection to Friant-Kern Canal                                 | Project       | Modify Water Conveyance Systems   | North Kern WSD            | C, E, G, H, K, L         |                         |

1 See Figure 5.1 for locations around region, labeled according to 'Map No.'

2 Status based on activity readiness for implementation, see description page for letters.

3 Anticipated year(s) of implementation or planning/preliminary design.

## Poso Creek IRWM Project and Program Report List

Page 2 of 5

Active Projects and Programs (Based on IRWM Group Submissions)

List Printed on: 5/30/2014

| Map No. <sup>1</sup> | Status <sup>2</sup> | Year(s) <sup>3</sup> | Activity Title  | Activity Type | Purpose   | Applicant                        | Measurable Objective(s)*     | Estimated Total Cost(s) |
|----------------------|---------------------|----------------------|---|---------------|---|----------------------------------|------------------------------|-------------------------|
| 8                    | L                   | 2014+                | Multi-District Conveyance Facility (CA Aqueduct to Friant-Kern Canal)                     | Project       | Modify Water Conveyance Systems                         | Semitropic WSD                   | A, C, D, E, F, G, H, K, L    | \$ 70,000,000           |
| 9                    | L                   | 2014+                | Arsenic Treatment Plant   | Project       | Modify Water Conveyance Systems                         | Semitropic WSD                   | G, K, L                      |                         |
| 10                   | L                   | 2014+                | Reverse Flow in the Friant-Kern Canal   | Project       | Modify Water Conveyance Systems                         | Kern-Tulare WD                   | C, E, K, L                   |                         |
| 11                   | L                   | 2014+                | Shafter-Wasco/Semitropic Intertie on Kimberlina Rd.                                       | Project       | Modify Water Conveyance Systems                         | Semitropic WSD, Shafter-Wasco ID | C, D, E, F, G, H, K, L       | \$ 20,000,000           |
| 12                   | N                   | 2013-2016            | Shafter-Wasco/Semitropic Intertie on Madera Ave.  | Project       | Modify Water Conveyance Systems                         | Semitropic WSD, Shafter-Wasco ID | C, D, E, F, G, H, K, L       | \$ 11,000,000           |
| 13                   | L                   | 2014+                | G-W Banking for Parties Outside Poso Creek IRWMP Region                                   | Program       | Non-Structural Enhancement to Regional Water Management | Semitropic WSD                   | A, C, D, E, F, G, H, K, L, N |                         |
| 13A                  | N                   | 2014                 | Reverse Flow in the CA Aqueduct   | Program       | Non-Structural Enhancement to Regional Water Management | Semitropic WSD                   | C, E, K, L                   |                         |
| 14                   | N                   | 2014+                | Optimizing Region's Pumping Lifts   | Program       | Non-Structural Enhancement to Regional Water Management | Poso Creek IRWM Group            | C, E, F, K, L                |                         |
| 15                   | N                   | 2014                 | Enhance Groundwater Monitoring and/or Modeling  | Program       | Non-Structural Enhancement to Regional Water Management | Poso Creek IRWM Group            | F, G, K, L, M, N             |                         |
| 16                   | L                   | 2014+                | Wildlife Improvement Projects in IRWMP Region (coordination with TBWP)                    | Project       | Enhance Environmental Resources                         | Poso Creek IRWM Group            | I, K, L                      |                         |
| 17                   | L                   | 2014+                | Environmental Water Management in Support of Wildlife Settlements Outside of IRWMP Region | Project       | Enhance Environmental Resources                         | Poso Creek IRWM Group            | I, K, L                      |                         |

1 See Figure 5.1 for locations around region, labeled according to 'Map No.'

2 Status based on activity readiness for implementation, see description page for letters.

3 Anticipated year(s) of implementation or planning/preliminary design.

## Poso Creek IRWM Project and Program Report List

Page 3 of 5

Active Projects and Programs (Based on IRWM Group Submissions)

List Printed on: 5/30/2014

| Map No. <sup>1</sup> | Status <sup>2</sup> | Year(s) <sup>3</sup> | Activity Title   | Activity Type | Purpose   | Applicant   | Measurable Objective(s)* | Estimated Total Cost(s) |
|----------------------|---------------------|----------------------|--|---------------|---|---|--------------------------|-------------------------|
| 18A                  | L                   | 2014+                | The Poso Creek Flood Control and Water Conservation Reservoir Project                                      | Project       | Enhance Flood Control   | Semitropic WSD, North Kern WSD, Cawelo WD, County of Kern | H, I, K, L               |                         |
| 18B                  | L                   | 2014+                | Flood Management and Habitat Restoration Improvemtns along Poso Creek Flood Channel                        | Project       | Enhance Flood Control   | North West Kern RCD                                       | H, I, K, L               |                         |
| 18C                  | L                   | 2014+                | Flood Management and Habitat Restoration Improvemtns in McFarland Area                                     | Project       | Enhance Flood Control   | City of McFarland   | H, I, K, L               |                         |
| 19                   | L                   | 2014+                | Enhance Water Supply, Address Drinking Water Treatment Needs, and Upgrade Waste Water Treatment Facilities | Project       | Assist Economically-Disadvantaged Communities                         | Various   | C, G, J, K, L            |                         |
| 19A                  | N                   | 2015                 | Lost Hills Groundwater Well (Potable Supply) and Storage Tank Replacement                                  | Project       | Assist Economically-Disadvantaged Communities (Water Supply)          | Lost Hills Utility District                               | C, G, J, K, L            | \$ 2,200,000            |
| 19B                  | N                   | 2014                 | Stormwater Improvement in McFarland  | Project       | Assist Economically-Disadvantaged Communities (Enhance Flood Control) | City of McFarland   | H, J, K, L               |                         |
| 19C                  | N                   | 2014+                | Lost Hills Repair and Upgrade Wastewater Treatment Plant   | Project       | Assist Economically-Disadvantaged Communities (Wastewater Treatment)  | City of Lost Hills  | C, G, J, K, L            |                         |
| 19D                  | N                   | 2014+                | Delano Wastewater Treatment Plant Upgrade and Effluent Reuse   | Project       | Assist Economically-Disadvantaged Communities (Wastewater Treatment)  | City of Delano  | C, G, J, K, L            |                         |

1 See Figure 5.1 for locations around region, labeled according to 'Map No.'

2 Status based on activity readiness for implementation, see description page for letters.

3 Anticipated year(s) of implementation or planning/preliminary design.

## Poso Creek IRWM Project and Program Report List

Page 4 of 5

Active Projects and Programs (Based on IRWM Group Submissions)

List Printed on: 5/30/2014

| Map No. <sup>1</sup> | Status <sup>2</sup> | Year(s) <sup>3</sup> | Activity Title  | Activity Type | Purpose   | Applicant                                 | Measurable Objective(s)* | Estimated Total Cost(s) |
|----------------------|---------------------|----------------------|---|---------------|---|---|--------------------------|-------------------------|
| 19E                  | N                   | 2014+                | Buttonwillow Wastewater Treatment Plant Upgrade                 | Project       | Assist Economically-Disadvantaged Communities (Wastewater Treatment)  | Community of Buttonwillow                 | C, G, J, K, L            |                         |
| 19F                  | N                   | 2014+                | Richgrove Water and Wastewater Treatment Plant Upgrade          | Project       | Assist Economically-Disadvantaged Communities (Wastewater Treatment)  | Community of Richgrove                    | C, G, J, K, L            |                         |
| 19G                  | L                   | 2014+                | South Shafter Wastewater Treatment Plant Upgrade                | Project       | Assist Economically-Disadvantaged Communities (Wastewater Treatment)  | Community of South Shafter                | C, G, J, K, L            |                         |
| 19H                  | L                   | 2014+                | Wasco Drinking Water Storage Tank                               | Project       | Assist Economically-Disadvantaged Communities (Water Supply)          | City of Wasco                             | C, G, J, K, L            |                         |
| 19I                  | N                   | 2014+                | Alpaugh Distribution Network Leak Detection and Repair          | Project       | Assist Economically-Disadvantaged Communities (Water Supply)          | Community of Alpaugh                      | C, G, J, K, L            |                         |
| 19J                  | N                   | 2014+                | Allensworth SCADA and Tank Replacement System                   | Project       | Assist Economically-Disadvantaged Communities (Water Supply)          | Community of Allensworth                  | C, G, J, K, L            |                         |
| 19K                  | N                   | 2014+                | Allensworth Distribution Network Leak Detection and Repair      | Project       | Assist Economically-Disadvantaged Communities (Water Supply)          | Community of Allensworth                  | C, G, J, K, L            |                         |
| 20                   | C                   | 2012                 | On-Farm Mobile Lab, Water Efficiency Services                   | Project       | Water Conservation  | North West Kern RCD                       | C, E, K, L               |                         |
| 21                   | C                   | 2013                 | Demand Reduction/Land Retirement                                | Program       | Water Conservation  | Semitropic WSD                            | I, K, L                  |                         |
| 22                   | C/N                 | 2006-2014+           | Oilfield Produced Water Supplies                                | Project       | Alternative Water Supply to Reduce Dependence on Traditional Supplies | Cawelo WD, Semitropic WSD, Kern-Tulare WD | A, C, E, G, K, L         |                         |
| 23                   | C                   | 2012                 | NRCS On-Farm Programs for Water Quality and Supply Conservation | Program       | Water Conservation  | Poso Creek IRWM Group                     | C, E, G, K, L            |                         |

1 See Figure 5.1 for locations around region, labeled according to 'Map No.'

2 Status based on activity readiness for implementation, see description page for letters.

3 Anticipated year(s) of implementation or planning/preliminary design.

**Poso Creek IRWM Project and Program Report List**

Page 5 of 5

*Active Projects and Programs (Based on IRWM Group Submissions)*

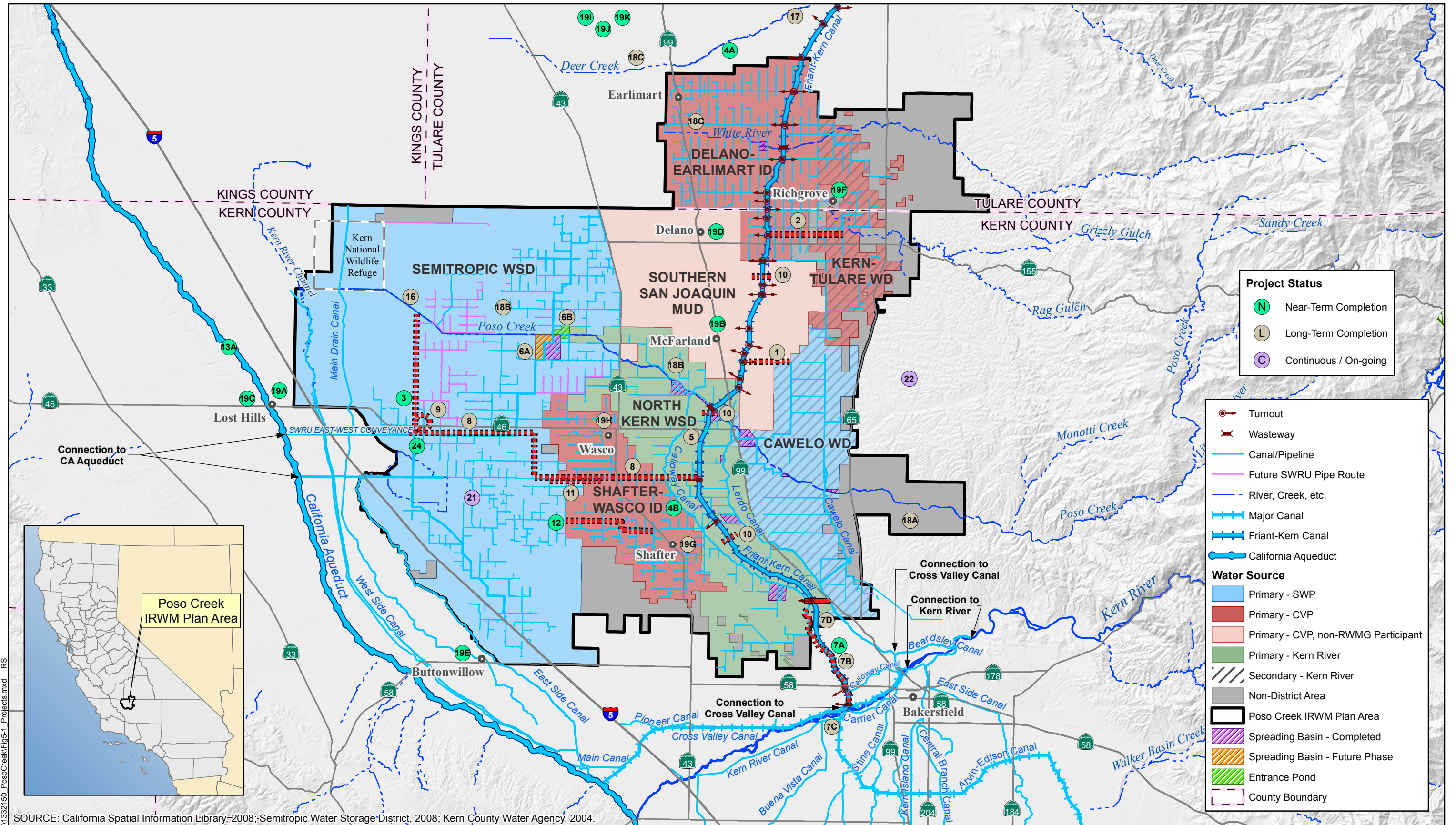
List Printed on: 5/30/2014

| Map No. <sup>1</sup> | Status <sup>2</sup> | Year(s) <sup>3</sup> | Activity Title                      | Activity Type | Purpose                           | Applicant  | Measurable Objective(s)* | Estimated Total Cost(s) |
|----------------------|---------------------|----------------------|-------------------------------------|---------------|-----------------------------------|--|--------------------------|-------------------------|
| 24                   | N                   | 2014-2016            | Meter Testing Facility              | Project       | Water Conservation                | Semitropic WSD   | C, F, K, L               | \$ 200,000              |
| 25                   | N                   | 2014                 | Semitropic Groundwater Model Update | Program       | Assess Groundwater Uses in Region | Semitropic WSD   | B, F, K, L, M, N         |                         |
| 26                   | N                   | 2014                 | Regional Groundwater Assessment     | Program       | Assess Groundwater Uses in Region | Poso Creek IRWM Group, Kern Groundwater Monitoring Committee | B, F, K, L, M, N         |                         |

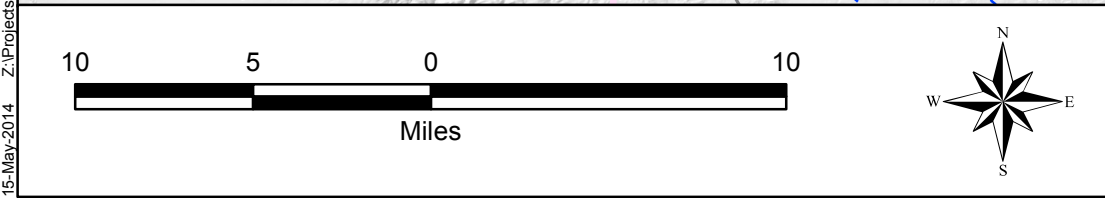
1 See Figure 5.1 for locations around region, labeled according to 'Map No.'

2 Status based on activity readiness for implementation, see description page for letters.

3 Anticipated year(s) of implementation or planning/preliminary design.



SOURCE: California Spatial Information Library, 2008; Semitropic Water Storage District, 2008; Kern County Water Agency, 2004.



2014 Integrated Regional Water Management Plan (IRWMP) Update  
 Kern and Tulare Counties, California  
 Poso Creek IRWM Group



IRWM PLAN PROJECTS AND PROGRAMS IDENTIFIED IN THE POSO CREEK REGION  
 JUNE 2014  
 FIGURE 5.1

15-May-2014 Z:\Projects\1332150\_PosoCreek\Fig5-1\_Projects.mxd RS